

Union Depot

St. Paul, MINNESOTA

## Tenants

Amtrak  
Metro Transit Buses  
Metro Transit Green Line LRT  
Jefferson Lines  
Megabus.com  
Treasure Island Casino Shuttle  
Mystic Lake Casino Shuttle  
Hertz  
Lowertown Bike Shop

## Contact Information

Chad Macy, CLS  
Vice President, Leasing  
JLL  
10 Rosedale Center  
Roseville, Minnesota 55113  
tel +1 651 746 5313 • fax +1 651 638 3599  
chad.macy@am.jll.com

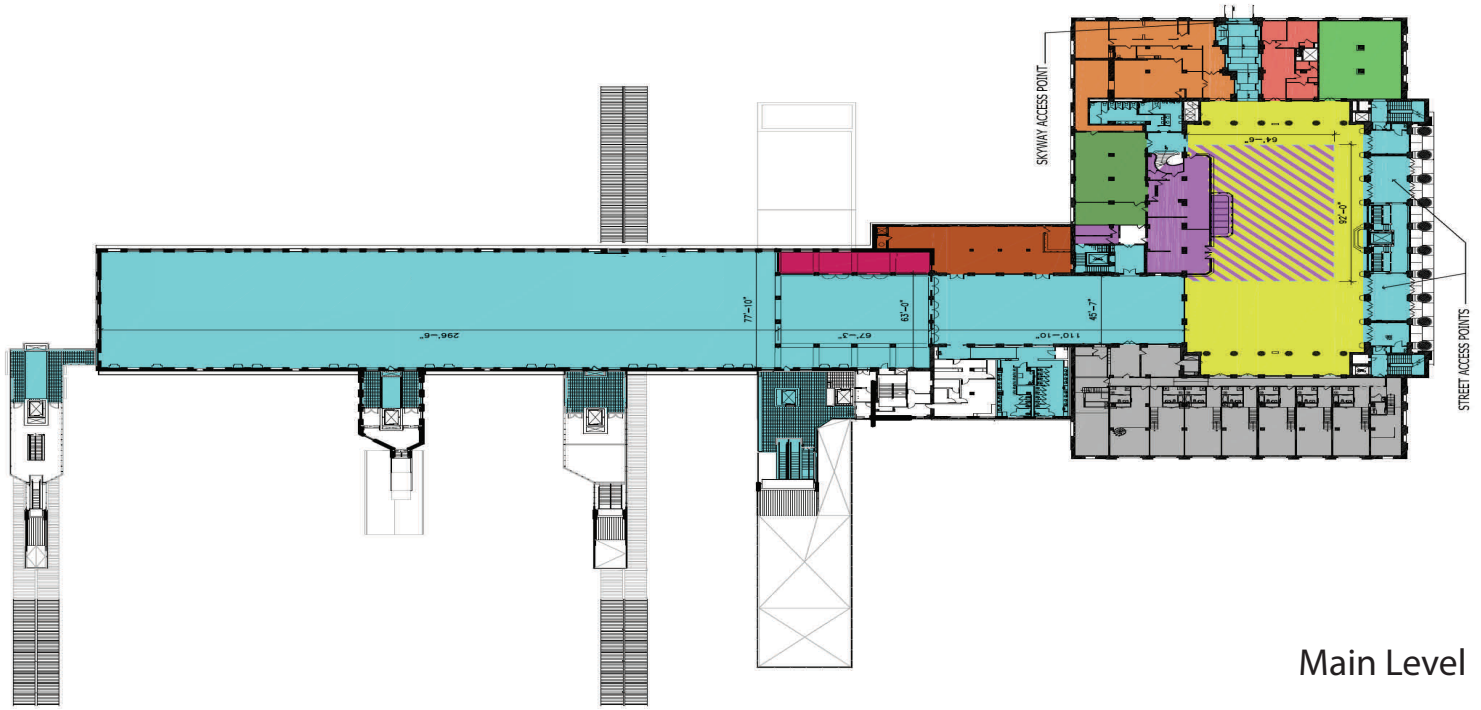
Tannen Loge  
Senior General Manager  
214 4th Street E., Suite 300  
St. Paul, Minnesota 55101  
tel +1 651 202 2701  
tannen.loge@am.jll.com

## Property at a Glance

- Set in downtown St. Paul's rapidly growing Lowertown neighborhood, an area known for fresh food, fresh art, and fresh culture, Union Depot is well-positioned as an innovative retail and entertainment destination.
- Amtrak relocated to Union Depot Spring 2014 and the Metro Transit Green Line began service at Union Depot on June 14, 2014. Union Depot will bring nearly 1 million visitors to the station by 2020, and 4 million annually over the next 25 years. The parking capacity at Union Depot is currently 1,288.
- The property reopened to the public December 2012 following a \$243 million renovation. Union Depot offers a robust public and private event program featuring arts & culture, music and entertainment events, historical displays, holiday events and more which will attract over 200,000 attendees in 2017.
- St. Paul attracts more than 6 million people annually to downtown events and institutions. Union Depot is just steps away from many of Lowertown's main attractions such as the St. Paul Farmers Market, attracting more than 15,000 people on any given weekend, Mears Park, which draws tens of thousands to the neighborhood annually with their festival-type events, the new CHS Field, Science Museum of Minnesota and the Xcel Energy Center.
- Just two blocks from Union Depot is CHS Field, home of the St. Paul Saints minor league baseball team. The 7,000+ seat ballpark features more than 50 baseball games per year and plans to host over 100 non-baseball events annually.
- More than 74,000 employees work downtown St. Paul, which is home to many major corporations including US Bank, Microsoft, The Travelers Companies, Securian Financial, Ecolab, Comcast, Wells Fargo, AgriBank, and several of the area's major hospitals.
- The Lowertown neighborhood and surrounding Downtown St. Paul continues to see expansive growth. There were 7,911 residents in 2014, that number is expected to skyrocket to 14,280 by 2020, an 80 percent jump. Recently, more than 1,500 new housing units and 150 hotel rooms opened within 8 blocks of Union Depot.



www.uniondepot.org



Main Level

## Site Plan

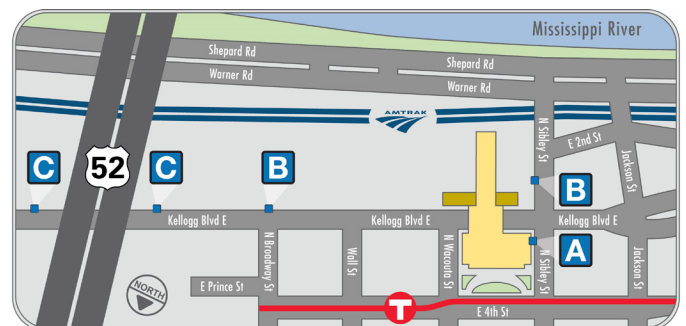
# Union Depot

## Statistics & Demographics

Property Data	
Opening Date	1926
Renovation Dates	2011-2012
Site	33 acres
Parking	1,288 spaces
Levels	3
Leasable Area	
Total Property	250,000 s.f.
Total Leasable Square Footage	39,858 s.f.
Trade Area 5-Mile Radius	
Population	352,367
Households	138,444
Avg. Household Income	\$70,524
Median Age	33.6
Business Population	230,598
Trade Area 15-Mile Radius	
Population	1,698,104
Households	687,615
Avg. Household Income	\$86,141
Median Age	36.0
Business Population	1,322,551

Source: Esri - 2016

## Location Map



### Union Depot

214 4th Street E.  
 St. Paul, Minnesota 55101  
 tel +1 651 202 2700